



NOW & THEN
at the
PROCTER MUSEUM & ARCHIVES
(Downstairs at the STOCKBRIDGE LIBRARY)
ISSUE #70
AUGUST 2020

TO SUBSCRIBE TO
"NOW & THEN"
e-newsletter
contact

simanl@roadrunner.com

Maria L. Carr, Editor

Past issues may be accessed
at the Library website
stockbridgelibrary.org



ON THE TOWN

Neighborhood History Walks

Join us for walking tours in the following neighborhoods:

Church Street – Saturday, August 15 at 4:00 p.m.

Elm Street from 1862 – Saturday, September 19 at 4:00 p.m.

Observing guidelines for COVID-19, we will limit the number of participants and provide headsets that will allow for social distancing.

Preregistration is required to attend.

To register: email ballen@cwmares.org or call 298-8190

(Photos at left: walking tours in 2019 of Butler Road led by Rich Bradway at top and Seraeant Street led by Deb McMenemy at bottom)

GLENDALE SIGN AT ROEDER PARK

Roeder Park, located at the northwest corner of Glendale Middle Road and Route 183 (Glendale Road) was the original site of the Glendale Store, created as a company store for the Glendale Woolen Mill. In 1963 the roof of the store collapsed due to heavy snow accumulation. On August 31, 1964 the property was given to the Laurel Hill Association which has maintained it as a small park ever since.

Much has transpired at the park. In 1998, after selling the church building, the members of the Glendale Union Chapel Society voted to give a gazebo to the village of Glendale and placed it at Roeder Park. A second tree was planted 2010 in memory of Jamie Bugley (1968-2010) replacing a previous tree which had been stolen. In 2016 a plaque was placed by a Norway Spruce tree in memory of Helen (Koloski) Pigott (1932-2015), a life-long resident of Glendale. The Norway Spruce is decorated with Christmas lights each year by the Laurel Hill Association.

There is a wooden sign located at the park, stating "Glendale, Mass. Settled 1760". The sign, which is currently in poor condition, was painted about 20 years ago by Jim Schantz who lives in the former Glendale Chapel. The sign was not there when the store was located on the property; therefore, it was erected after 1964. We're looking for information about the sign and its origins. Can anyone help?



REOPENING

The Library will reopen in early August with limited hours and activities. Please check the Library's website for information.

The Museum & Archives will reopen at the same time. It will be available to patrons by appointment on the half hour, starting at 10:30. Only one researcher/visitor will be allowed in the M&A at a time, but will be permitted to work for up to a maximum of two hours.

Masks are required

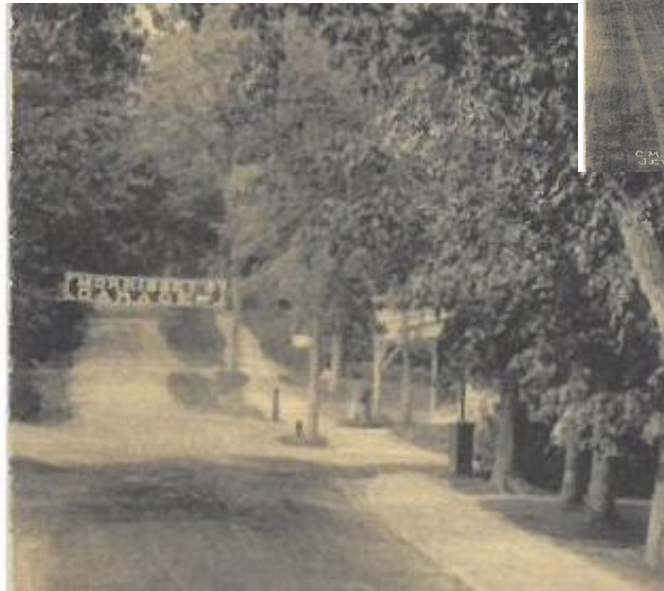
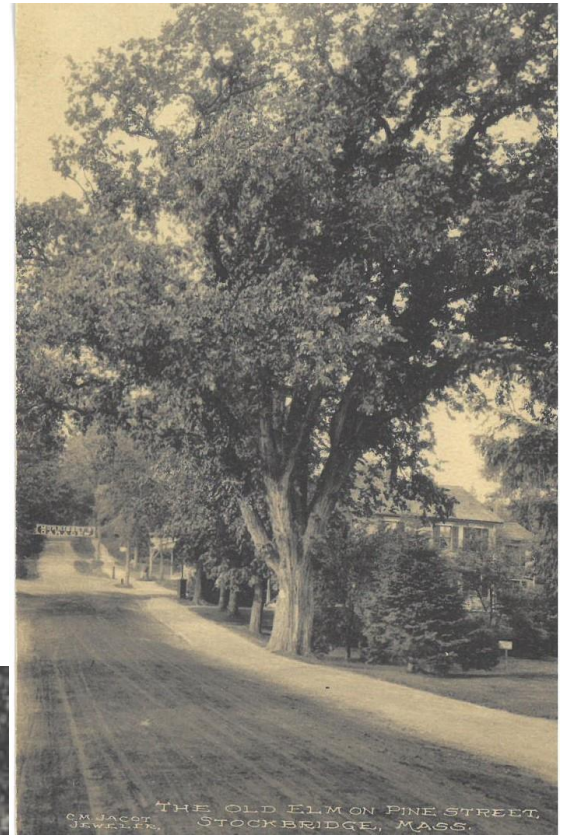
MORRISSEY'S GARAGE

The April 1982 clipping (*bottom left*) from the *Berkshire Courier* shows Morrissey's Garage on Pine Street near the corner of Shamrock Street. The picture is a reprint from a 1911 issue of the *Courier*. Heaton Hall can be seen in the background. The postcard to the right and directly below, from the M&A collection, also pictures the Morrissey's Garage sign.

Dennis Morrissey's name is shown on the 1904 atlas map approximately where the Waldorf School currently is, and the 1904 *Southern Berkshire Directory* includes advertising for carriages, harness, bicycles, a full line of horse furnishings, horse shoeing, and blacksmithing. The 1909 directory lists the same with "also Auto Garage". Dennis is listed as the manager and William Morrissey, who is living with Dennis, works with Dennis. The directories prior to 1929 continue to list Morrissey's Garage at this location.

The 1929 directory listing is for Parson's Garage. The 1935-1937 *Southern Berkshire Directory* shows a listing for "Parsons Garage, auto supplies and accessories, repairing, etc." on Pine Street at this location with Henry B. Parsons next door.

A directory for 1952 lists it as "Vacant Garage".



SIGNS OF THE TIMES

During this pandemic with which we are living, signs seem to be popping up everywhere to tell us what is open or closed, what the rules are for entering, and thank you signs to show appreciation. But signs are nothing new. Back in the 1930s when the Planning Board was started, the first issue on their agenda was billboards. Those have disappeared, but many other types of signs have popped up in the town. They might identify a business, give directions, declare restrictions, advertise a product, or just give information.

From the M&A collection: Top – Sign on Glendale Middle Road; 2nd Row – Red Lion Garage (before it was Hall's Garage, currently vacant) and Town of Stockbridge Highway Department truck decorated for a parade; 3rd Row – Allen Treadway's car when he was running for Congress; bottom – Livery Stable sign on Main Street and sign where Church Street meets Main Street declaring it as Route 141 (now Route 102) with a small sign for Green Tree Inn

